



**PRESTO®**  
Testing Instruments  
Presto Stantest Pvt. Ltd.



# TIME TESTED.... TESTING INSTRUMENT

Adding Value To Your Metal Parts With  
Presto Paint, Plating & Coating  
Testing Instruments



Hot Air Oven  
Prima Series



Colour Matching Cabinet  
Spectrum I Prima series



Salt Spray Chamber  
Magnus IV Series



- Bath Fittings
- Hardwares
- Nuts & Bolts
- Home Appliances
- Automobiles
- Electronics



Dear friends,

Welcome to the world of Quality Testing Instruments.

From a humble beginning in 1983, Presto Stantest Private Limited has become one of the leading Testing Instrument Manufacturers in the Indian Subcontinent. Besides having branches all across India, the company is proud to have a commendable global presence.

Our long tradition of reaching our valued customers and providing them with the best & most economical solution is a rich legacy we have been carrying for more than 40 years.

We, at Presto Stantest, present to you a unique fusion -advanced features and precision testing rolled into state-of-the-art testing solutions. Testing the quality of your products has never been easier. Make our experience, your advantage!

Bests,

**Mr. Gaurav Malhotra**  
CEO,  
Presto Group

**Mr. Vishal Malhotra**  
Managing Director,  
Presto Group

# Why Presto ?

Because over **11,436** customers across the globe have put their faith in us and we have surpassed their expectations. And, because we ensure...

## High Quality & Perfection



We are National Quality Award winners from the Government of India. All our products are unmatched in quality and design.

## Expertise & Adaptability



40+ years of experience in providing testing solutions to the world.

## Cost Benefit



All our Products are manufactured in our 2 state of the art factories. They are standardized using CNC machines to provide long term cost benefits to customers.

## Highly Motivated Team



180+ Team members to provide best services PAN India and globally.



Head Office



Certifications



Automated Factory



National Quality Award  
1<sup>st</sup> Prize Winners



Automated Machinery



**ISO 9001 : 2015  
Certified Company**



**National Award Winner  
for Quality Products**



**4 Decades of Experience  
in this Industry**



**In-house Research  
& Development Facility**

S. No.	INSTRUMENT	Page No.
1.	Conditioning / Humidity Chambers	5
2.	Salt Spray Chamber - Korrox III	6-7
3.	pH Meter	7
4.	Programmable Temperature & Humidity Chamber	8
5.	Thermal Shock Chamber	8
6.	Accelerated Weathering Testers	9
7.	Impact Resistance Testers for Paint	10
8.	Gloss Meter Tri-Angle	10
9.	Hot Air Oven	10
10.	Coating Thickness Gauge	11
11.	Scratch Hardness Tester	11
12.	Conical Bending Mandrel	11
13.	Cupping Machine	11
14.	Wall Thickness Gauge Digital - Magna Mike 8600	12
15.	Drop Testers	12
16.	Hot Water Bath	12
17.	Colour Measuring Instruments	13
18.	Tensile Testing Machine Digital / Computerised	14
19.	Tensile Tester with COF	15
20.	Melt Flow Index - Dx	15
21.	Moisture Meter	15
22.	Industrial Hot Air Oven	16
23.	Ultra Low Deep Freezer	16
24.	Humidity / Conditioning Chamber- 1.5 Meter	16
25.	Izod/Charpy Impact Tester Digital	17
26.	Notch Cutter	17
27.	Box Compression Tester Digital	17
28.	Vibration Table	18
29.	Muffle Furnace	18
30.	Bursting Strength Tester Digital	18



Model : PCC 800 DX



Model : PCC 800 PRIMA



Model PTH-225

## PRESTO® Conditioning / Humidity Chamber - Dx

The PRESTO® Conditioning Chamber is an ideal environment chamber with the latest technology used to create the designated temperature & humidity. It has the lowest heat loss ratio due to high quality of insulation with imported PUF. Ergonomics and user ease are given a lot of importance while designing the system. It has complete DIGITAL controls.

### Technical Specification :

- **Inside Size :** 455mm x 455mm x 710mm
- **Humidity :** Range 65% - 95% (±5%)
- **Temperature Range :** 15°C to 60°C (±2°C)
- **Inside :** Stainless Steel
- **Outside :** Stainless Steel
- **Viewing :** Viewing Glass incorporated for visual Examination of sample.
- **Humidity Control & Temp. Controller :** Digital controller for both humidity & temperature
- **Timer :** Digital Pre-Set type. Timer to cut off Chamber after set no of hours.
- **Hour Totaliser :** Records total cumulative no. of hours the instrument has run.

## PRESTO® Conditioning / Humidity Chamber - Prima Series

The PRESTO® Conditioning Chamber is an ideal environment chamber with the latest technology used to create the designated temperature & humidity. It has the lowest heat loss ratio & max thermal efficiency due to high quality of insulation with imported PUF, Ergonomics and user ease are given a lot of importance while designing the system. Advanced feather touch panel with USB port.

### Technical Specification :

- **Inside Size :** 455mm x 455mm x 710mm
- **Humidity :** Range 65% - 95% (±5%)
- **Temperature Range :** 15°C to 60°C (± 2°C)
- **Inside and Outside Stainless Steel**
- **Temp. Control :** PT 100 Sensor
- **Communication for data output :** USB Port
- **Humidity & Temp. Controller :** 4.3" HMI Touch Screen with PLC control
- **Timer :** Incorporate in HMI Screen. Timer to cut off Chamber after set no of hours.
- **Compressor :** CFC free refrigerants & air cooled compressor.
- **History Record :** Data logging (Date, Time, Temperature & Humidity)

\* Other sizes are available on request.

## Programmable Temperature & Humidity Chamber - PTH

**Programmable Temperature & Humidity Test Chamber** is designed to create targeted environment/climatic conditions meant to test materials, components, and products for reliability and endurance. The equipment facilitates programming of a test cycle with pre-defined steps of rise & fall of temperature and humidity with respect to time. Colour touch screen control enables easy setting of program cycle and clear visibility of real time values.

### Specifications:

- **Internal Space** : W 1200 x D 500 x H 500 mm (300 L)
- **Temperature Range** : - 40°C ~ + 150°C
- **Temperature Uniformity** : ≤ 2°C (empty chamber)
- **Temperature Fluctuation** : ± 1°C (empty chamber)
- **Temperature Sensor** : Pt100
- **Humidity Range** : 20% ~ 98%RH
- **Humidity Uniformity** : ± 3 %RH
- **Humidity Fluctuation** : ± 2%
- **Cooling Ramp Rate** : 0.7 ~ 1.0°C/min

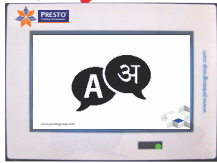
### Note:

\* Other sizes and configurations are available on request



**PRESTO® Salt Spray Chamber - KORROX - III**

Click to Hindi for Easy operator understanding



Model Korrox III

Design Registration No. # 244580



Welcome to the new world of Human Machine Interface ( HMI ) the TOUCH technology of the 21<sup>st</sup> Century.

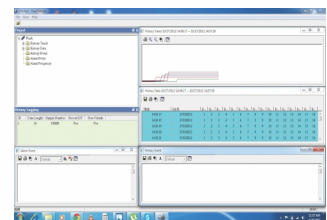
**Features of the touch screen include :**

- 7" (480 x 234) 16:9 TFT LCD 65536 colors
- Provides USB Host for USB flash drive
- Supports CF memory card
- USB 1.3 for high-speed screen data download
- 3 sets of COM ports for multiple communication protocols
- 8 function keys
- 480 x 234 pixels IP 65 compliant
- ARM9 32-bit CPU
- 3M Flash Memory
- 256K bytes SRAM
- Supports Ethernet

The Presto® Salt Spray (Fog) Tester has been designed strictly as per the relevant standards to assess the ability of rust proofed components to withstand corrosion due to atmospheric conditions.

**Related Standards :** JIS Z237 I ; DIN 5002 I ; ASTM B 117 ; IS:5528 ; IS:6910 ; ISO:3768

MODEL	Korrox™ - 250 *	Korrox™ - 450	Korrox™ - 1000
Internal Size : (Dimension in mm)	800x500x550	1000x700x750	1600x700x800
External Size : (Dimension in mm)	1970x990x1240	2200x1150x1550	2750x1170x1650



Test Report

- Online pH meter available on request
- **CASS Test Chambers** available in above sizes.
- Cyclic corrosion test chamber available on request.

**Standard Supply :**

All models are equipped with Auto Air purging, Time totaliser, Timer, Air Regulator, Pressure Gauge and Specimen racks, (unless other wise mentioned in chart above.)

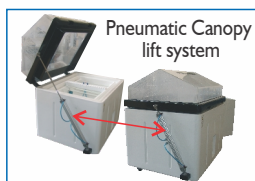
Due to continuous improvement, specifications are subject to change without prior notice.



I/O Samples Alarm Setting



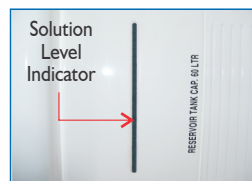
Control Panel



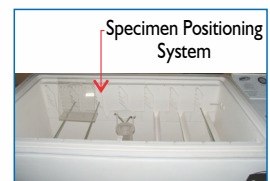
Pneumatic Canopy lift system



Automatic Leveler For Air Saturator



Solution Level Indicator



Specimen Positioning System

Check for options

## CASS Cum Salt Spray Chamber

Presto Cass cum salt spray chamber is one of the most reliable and accurate testing instruments that will help you to check the corrosion resistance of the product when placed in a salt-laden environment.

The Presto Cass Cum Salt Spray Chamber (250/450/1000 Ltr.) - Touch Screen Model CASS-250/450/1000H testing instrument is one of the most advanced and versatile testing instruments that provides you the facility to calculate corrosion resistance of surface coatings. With the help of this advanced testing machine, you will be able to test whether the metal specimen would be able to withstand the environmental conditions or it will get corrosive.

This testing chamber has been made in accordance with various industry standards like JIS Z 2371, ASTM B117 – 11, IS: 5528, IS: 6910 (R2003). It basically creates a corrosive environment in which the specimen will be placed for several hours. The dense salt fog will be provided inside the chamber and the metal specimen will be exposed to reveal the rate of corrosion.

### Features At A Glance

- You can easily control and measure the salt spray
- This instrument is easy to install and operate
- It comes with standard sample holders.
- HMI based Touchscreen Display for ease of operation
- Inbuilt PID temperature settings for accuracy
- Corrosion Resistant PT-100 sensor
- Program profile installed for selecting test parameters of the test.
- User can create PID settings, Air Saturator settings; test temperature, test and air purge time, etc.
- Live test running status can be displayed
- Robust Construction with triple-walled Fiber-reinforced body
- Air purge post-test for fog settlement.
- Reservoir Tank inside sponge filter equipped
- Data can be saved to the USB device (Pen drive not in the part of the supply).
- Set values (SV) and present values (PV) displayed together.
- Angle of Canopy designed to restrict the flow of droplets directly on the test sample



\*Optional

Model No : KORROX-III (250 Ltr.)

Design Patent : 244580

## Cyclic Salt Spray Chamber : Cyko

Presto Cyclic Corrosion Chambers – Worlds most Interactive and versatile corrosion test systems range available, synthesizing salt spray with other environmental conditions such as controlled humidity, ambient drying, air drying, dwell cycle and wetting/condensation.

Presto cyclic corrosion chambers models will perform the neutral salt spray tests, along with in addition these CCT models are loaded with extra features which enables users to perform intense 'modified' tests such as those explained in ASTM G85. In this the conventional salt spray is often programmed with multiple climates, in a multi-stage cycle, to intensify the test. Some Test Cycles Names include - Salt spray and Wetting / Condensation Humidity (SWAAT) or Salt spray and Air drying (PROHESION).

### Features At A Glance

- 3 different cyclic operation (NSS + DRY + HIGH HUMIDITY Program profile for selecting test parameters and performing the test)
- Relative humidity can be monitored on screen
- Inbuilt humidity source with auto water refilling
- Easy to understand nature of challenge
- Low compressed air alarm (Smart device introduce)
- Easy to run cyclic test & arrange the cyclic test operation
- Option for setting Individual Admin Settings
- Incorporated with a PID auto tuner block into our system, the PID parameters are presented as the parameters of the general PID control algorithm or the ISA algorithm.
- Over / under voltage protection
- Pneumatically operated canopy (optional)
- Reservoir Tank inside sponge filter with low solution level alarm
- Real time vs temperature graph
- Data recording with temperature data reading
- USB option available (Pen drive is not a part of supply)
- User can control PID settings through Advanced Hysteresis setting
- Angle of Canopy maintained in order to restrict flow of droplets directly on the test sample.
- Low Nacl solution alarm.



Model No : CCT-450

Design Patent : 244580



Detail Technical Specifications :	Korrox - III H Series NSS			Korrox - III H Series CASS cum NSS			Korrox - IV Magnus Series NSS			Korrox - IV Magnus Series CASS cum NSS			CYCLIC- CYKO Series	
	250 H	450 H	1000 H	250 H	450 H	1000 H	250 H	450 H	1000 H	250 H	450 H	1000 H	450 H	1000 H
<b>CONSTRUCTION</b>														
FRP Material	✓	✓	✓	✓	✓	✓	✓	✓	✓	✓	✓	✓	✓	✓
Triple Walled	✓	✓	✓	✓	✓	✓	✓	✓	✓	✓	✓	✓	✓	✓
<b>PARAMETERS</b>														
Capacity LTR	250	450	1000	250	450	1000	250	450	1000	250	450	1000	450	1000
Chamber Temp. max. °C	45	45	45	55	55	55	45	45	45	55	55	55	60	60
Tolerance °C	± 2	± 2	± 2	± 2	± 2	± 2	± 2	± 2	± 2	± 2	± 2	± 2	± 2	± 2
Air Saturation Max. Temperature °C	55	55	55	60	60	60	60	60	60	60	60	60	65	65
Air Pressure max. bar	3	3	3	3	3	3	3	3	3	3	3	3	4	4
Solution Tank Capacity Ltr.	60	60	60	60	60	60	60	60	60	60	60	60	60	60
<b>CONTROLS</b>														
Display	Touch Screen	Touch Screen	Touch Screen	Touch Screen	Touch Screen	Touch Screen	Touch Screen + *E	Touch Screen + *E	Touch Screen + *E	Touch Screen + *E	Touch Screen + *E	Touch Screen + *E	Touch Screen + *E	Touch Screen + *E
Air Regulator & Gauge (Analog)	✓	✓	✓	✓	✓	✓	✓	✓	✓	✓	✓	✓	✓	✓
USB output of Data	✓	✓	✓	✓	✓	✓	✓	✓	✓	✓	✓	✓	✓	✓
Low Level Alarm (Air Saturator)	✓	✓	✓	✓	✓	✓	✓	✓	✓	✓	✓	✓	✓	✓
High Temp. Alarm	✓	✓	✓	✓	✓	✓	✓	✓	✓	✓	✓	✓	✓	✓
Auto Purge setting	✓	✓	✓	✓	✓	✓	✓	✓	✓	✓	✓	✓	✓	✓
Manual Purge	✓	✓	✓	✓	✓	✓	✓	✓	✓	✓	✓	✓	✓	✓
Pneumatic Canopy Hood Opener	✓	●	●	✓	●	●	✓	●	●	✓	●	●	●	●
Pressure Display	✓	✓	✓	✓	✓	✓	✓	✓	✓	✓	✓	✓	✓	✓
Hindi Language	✓	✓	✓	✓	✓	✓	✓	✓	✓	✓	✓	✓	✓	✓
Auto SMS (AI)	✓	✓	✓	✓	✓	✓	✓	✓	✓	✓	✓	✓	✓	✓
Trouble Shooting	✓	✓	✓	✓	✓	✓	✓	✓	✓	✓	✓	✓	✓	✓
IO Sample Alarm Timer Setting	✓	✓	✓	✓	✓	✓	✓	✓	✓	✓	✓	✓	○	○
Spray Control PVC Valve	✓	✓	✓	✓	✓	✓	✓	✓	✓	✓	✓	✓	✓	✓
Upright Tower	✓	✓	✓	✓	✓	✓	✓	✓	✓	✓	✓	✓	✓	✓
Removable Collar	✓	✓	✓	✓	✓	✓	✓	✓	✓	✓	✓	✓	✓	✓
<b>OTHER</b>														
Fog Collector external	✓	✓	✓	✓	✓	✓	✓	✓	✓	✓	✓	✓	✓	✓
Specimen Positioning System	✓	✓	✓	✓	✓	✓	✓	✓	✓	✓	✓	✓	✓	✓
Solution Level Indicator	✓	✓	✓	✓	✓	✓	✓	✓	✓	✓	✓	✓	✓	✓
Automatic Leveler For Air Saturator	✓	✓	✓	✓	✓	✓	✓	✓	✓	✓	✓	✓	✓	✓
<b>OPTIONS</b>														
PH Meter online/offline	●	●	●	●	●	●	●	●	●	●	●	●	●	●
Humidity Sensor & Indicator	○	○	○	○	○	○	✓	✓	✓	✓	✓	✓	✓	✓
<b>Special Feature</b>														
PDF Test report	○	○	○	○	○	○	✓	✓	✓	✓	✓	✓	✓	✓
Over voltage & under voltage protection	○	○	○	○	○	○	✓	✓	✓	✓	✓	✓	✓	✓
Solution Level Low Alarm	○	○	○	○	○	○	✓	✓	✓	✓	✓	✓	✓	✓
Air monitoring Device with Low air alarm	○	○	○	○	○	○	✓	✓	✓	✓	✓	✓	✓	✓
Computer Connectivity	○	○	○	○	○	○	✓	✓	✓	✓	✓	✓	✓	✓
Email Notification	○	○	○	○	○	○	✓	✓	✓	✓	✓	✓	✓	✓

Legend;

✓: Available    ●: Optional    ○: Not Available

\*E: Ethernet

Procedure :

NSS (Neutral Salt Spray) :

pH 6.5 to 7.2, Temp. 35°C ± 2 Saturator Temp 46°C. \*

CASS (Cu Accelerated Acetic Acid Salt Spray):

pH 3.1 to 3.3, Temp. 49°C ± 1, Saturator Temp 63°C. \*

\* Please refer to standard you wish to follow

## PRESTO® Thermal Shock Test Chamber

To observe the product characteristics and failure occurrences caused by different materials and their thermal expansion coefficients, the product is subjected to thermal shock testing. In thermal shock testing alternating high and low temperatures are fed in the chamber. PRESTO designs and manufactures customized **Thermal Shock Chambers** with separately controlled temperature zones (2 zone and 3 zone), liquid to liquid (2 zone) depending on configuration of the chamber chosen.

**2 zone:** Two-Zone chamber has hot and cold zones that can be controlled independently. A single basket product carrier moves between the hot and cold zones, subjecting the product to dramatic changes in temperature.

**3 Zone:** Three-zone thermal shock chamber utilizes controlled areas for hot, ambient and cold temperatures. The product is moved from ambient to hot or ambient to cold zones. The chamber can be programmed to include a dwell period in the ambient zone if desired.

## PRESTO® Xenon Weathering Test Chamber - PSPL 866

The xenon test chamber is an ideal instrument that is used for testing of polymeric products for effects of weathering factors. The instrument utilizes a xenon bulb which emits an energy spectrum which replicates the actual sunlight and has an approximate color temperature of 6000K.

### Specification:

Xenon Lamp	A 1.8KW iXenon lamp
Filter	Daylight filter or Windows Glass filter
Lamp Lifetime	1,500 ~ 2,000 hours
Exposure Area	1,000 cm <sup>2</sup>
Capacity for Standard specimen (150×70cm)	9 pieces
Adjustable Irradiance range	0.5 ~ 2.0 W/m <sup>2</sup> (Single point of control: 340nm)
	0.35 ~ 1.0 W/m <sup>2</sup> (Single point of control: 420nm)
	50 W/m <sup>2</sup> ~ 120 W/m <sup>2</sup> (Full spectrum: from 300~400nm)
Adjustable testing Temperature range	RT+30? ~ 80?
Power Supply	220V 50/60HZ ; 12A
Max. Rated Power of Chamber	2.5 KW
Dimension (L×W×H)	780×580×1,040 mm
Net Weight	65 KG



Model PSPL 866

## PRESTO® Hot Water Bath

**Water Bath Digital** is a unique test cabinet designed to detect the change in the physical characteristics of material and to ascertain the actual working life of test samples at elevated temperature.

- **Inner Size:** L 1200×W 600×H 600 mm
- **Temperature Range:** upto 90°C
- Temperature control through PT-100 sensor
- Speed regulator for controlling the speed of stirrer

\* Other sizes available on request.



Model PWBD - 0136



Model PSPL - 855

## PRESTO® Accelerated Weathering Tester

This simulates the effect of sunlight with fluorescent ultraviolet (UV) lamps.

Types of damage include fading, colour change, chalking, cracking, crazing, embrittlement strength, etc.

Indoor weathering instruments test for moisture, humidity and temperature.

PRESTO UV weathering chamber with enhanced HMI feature gives operators more flexibility and control of accelerated weathering testing.

- Fluorescent UV Lamps as testing light source
- Irradiance controlled automatically (within closed loop system) (Model PSPL 856)
- Alarm and protection for faults
- **Temperature Range** : Black Panel Temperature (BPT) : RT+ 10°C~100°C

**Standards** : ASTM D4587-11, ASTM D 4329-13, ISO 4892-3;2013

\* Optional Humidity Control



Model No. PBUAW - 852

## PRESTO® Bench UV Accelerated Weathering Tester

**Bench UV Accelerated Weathering Tester** is a consistent tool that is useful for checking the damage caused by sunlight, rain and dew.

- 7" HMI Touchscreen
- Maintains rapid resumption of UV Lights during continuous circulation
- Program profile for selecting test parameters and performing the test.
- UV lamps to simulate short-wave ultraviolet part of sunlight
- Corrosion Resistant PT-100 sensor
- Fully automatic test after simple settings
- Solid state digital PID & TIMER
- Robust Construction
- Ease of use of sample placements inside the test chamber with rotating test fixtures



Model MF - 4 (900)

## PRESTO® Muffle Furnace

It is used in material's heat treatment, resolution, reaction at high temperature and ash analysis.

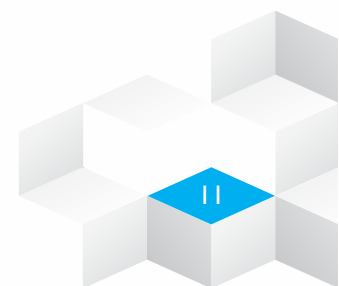
**Technical Specifications :**

- **Controlling** : Digital Temperature Controller cum Indicator
- **Maximum Temperature Range** : Ambient - 900°C
- **Power Requirement** : 220V Single Phase 2.5 KW
- **Inside Dimensions** : 100mm x 100mm x 225mm
- **Dimensions** : 670 x 400 x 680 mm

\* Other sizes available as per requirement.

**Optional Accessories :**

Digital Timer, PID Controller with Computer/printer interface.  
Range upto 1200°C also available on request.





## PRESTO® Impact Resistance Tester for Paint : Direct

**Impact Tester Direct** useful for mildly abused products in households, offices or labs after year of normal use.

### Specifications :

- **Impacter Weights :** 900 gm, 1000 gm
- **Guide Tube length :** 100 CM
- **Die Ø :** 16.3 mm, 27.0 mm
- **Punch :** 15.9 mm, 20.0 mm
- Duly powder coated and chrome plated for corrosion resistant finish.
- Unique and efficient sample locking arrangement.



Model PIR - 68

## PRESTO® Impact Resistance Tester for Paint : Indirect

### Impact Tester : Indirect (ASTM D2794, D3029, D4226)

Coatings like Paint / Varnish, tough plate, plastic or laminated coatings can be tested. Useful for checking resistance to impact surface damage and penetration for construction materials viz plastic, resin, fibreglass sheet metal and plywood.

### Specifications :

- **Impacter Weight :** 1 Kg & 2 Kg
- **Guide Tube length :** 100 CM
- **Die Ø :** 27.0 mm
- **Punch :** 15.9 mm
- Duly powder coated and chrome plated for corrosion resistant finish.
- Fast Guiding Mechanism



Model PIR - 69

## Gloss Meter Tri- Angle

**Tri-angle Gloss Meter** comes with 20°, 60° and 85° angle, comply with international standards of ISO2813, GB/T 9754, ASTM D523, ASTM D2457.

Measuring Area (mm)	20°: 10x10	60°: 9x15	85°: 5x36
Measuring Range	20°: 0~1000GU	60°: 0~1000GU	85°: 0~160GU
Division Value	0.1GU		
Measurement Range	0-10GU	10-100GU	100-1000GU
Repeatability	± 0.1GU	± 0.2GU	± 0.2%GU
Reproducibility	± 0.2GU	± 0.5GU	± 0.5%GU
Measurement Standard	Conform with JJG696 first class glossmeter working requirement		
Chromaticity Corresponding	Corresponding with CIE 1931(2°) under CIE C light source		
Standard Accessories	Power Adapter, USB cable, User Manual, Software CD (except basic model), Calibration Plate		



Model TKT - 862



## PRESTO® Hot Air Oven-Prima Series

**Hot Air Oven** is a unique test cabinet designed to detect the change in the physical characteristics of material and to ascertain the actual working life of testing device at elevated temperature.

- Intuitive Graphical Menu driven system
- Temperature control through PT-100 sensor
- Highly accurate test results under uniform temperatures in the chamber
- High Grade imported Glass Wool insulation
- Maximum Thermal Efficiency by insulation means.
- Advanced Digital Microprocessor based PID based temperature controller
- In-built programmable soak timer
- Auto tuning Advance PID controller



Model PSO-Prima Series

## Coating Thickness Gauge Ferrous & non Ferrous



Model TCT - FNF01

It is true professional product for material thickness measurement or coating thickness measurements and flaw detection.

- Non-destructively measure thickness of non-conductive coating (Paint, enamel, rubber plastic etc.) on magnetic (iron) & non-magnetic metal (Aluminum, copper, zinc, Tin, etc.) substrates .
- Auto-Hold reading on the display
- Based on Eddy current measurement method
- Flexible lead Measuring Probes set of 5 Calibration Foils and Zero Disks.
- **Thickness Range : 0-1250  $\mu\text{m}$**
- **Accuracy :  $\pm 2.5 \mu\text{m}$**



## PRESTO® Scratch Hardness Tester - Motorised / Hand Operated



Model PSHT - 80

Model PSHT - 40

It is a suitable apparatus for carrying out the tests relating to resistance to scratch under a specified load. Tests are conducted either on a go/no go basis by testing at a single specified load on the needle or by increasing loads to determine the minimum load at which the coating is penetrated. It is used in testing paints, varnishes and lacquers & similar products.

- **Stylus Angle :  $120^\circ \pm 5^\circ$**
- **Load on Stylus : 1 kg, 500 gm, 300 gm, 200 gm**
- **Length of travel of Stylus :  $100 \pm 8\text{mm}$**
- **Stylus Hemispherical : 200 micron  $\pm 10$  micron**
- **Stylus Material : Diamond**



## PRESTO® Conical Bending Mandrel



Model PCBM - 80

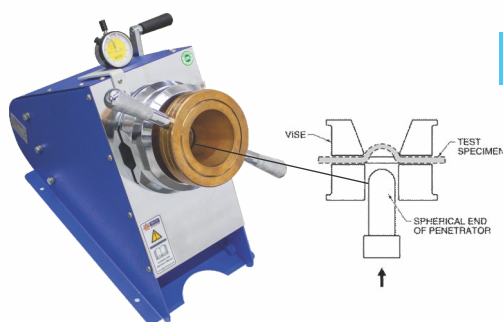
Presto Bend Test Conical Mandrel is a laboratory apparatus to bend coated test panels over a conical shaped mandrel in order to assess the elasticity or resistance of a coating paint or varnish to cracking, elongation and / or detachment from a metal test panel in accordance with ISO 6860 & ASTM D522.

- **Conical Cylinder : dia 3.1 mm & 38 mm  $\pm 0.1\text{mm}$**
- **Length of Conical Cylinder : 8 Inch**
- **Max. Sample Thickness : 0.8mm**
- **Conical Cylinder Material : Stainless Steel.**
- **Material / Finish : Mild steel bright chrome plated for corrosion resistant**

**Optional :** Bending mandrel with multiple mandrel size also available.



## PRESTO® Cupping Machine



Model PCM - 02 (Prima)

The Cupping Machine is used to check the drawability of sheet metal components and is manufactured strictly in compliance with IS : 10175 (Part I); 1993 & ISO 8490 : 1986, ISO 1520:2006.

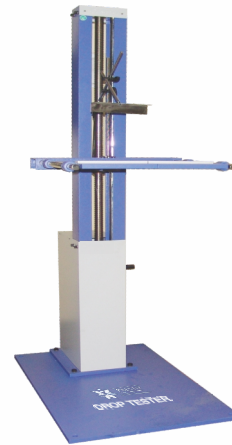
The machine has a standard ball which is made to penetrate through a clamped sample sheet upto 2 mm thickness. Fast Guiding Mechanism with hand operated wheel.



## PRESTO® Drop Tester

Drop tester is a reliable instrument that can be used for analyzing the ability of the packaging containers to withstand the drops faced by them during transit and shipping (As per IS:7028 Pt IV). Provision with angular drop arrangement to ascertain the transport worthiness of the package from all angles. Suitable for Boxes, Jerry cans.

- Provision to lift up test platform by guide mechanism
- Drop Height adjustable clamp
- Straight and Angular Drop tests can be performed on a single Instrument
- Drop Height : 770 mm (adjustable upto 1800 mm)
- Load : Upto 50 Kg

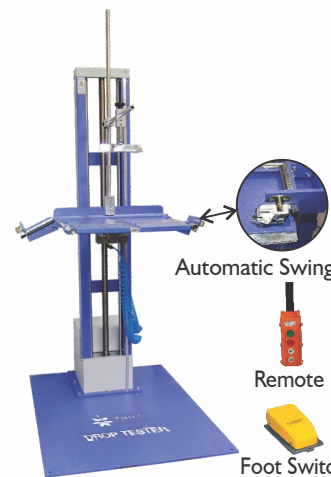


Model PDT - 0134

## PRESTO® Drop Tester Motorised / Pneumatic

Drop tester is a reliable instrument that can be used for analyzing the ability of the packaging containers to withstand the drops faced by them during transit and shipping (As per IS:7028 Pt IV). Provision with angular drop arrangement to ascertain the transport worthiness of the package from all angles. Suitable for Boxes, Jerry cans.

- Load : Upto 60 Kg
- Remote controlled Pneumatic test operation.
- Motor : Single phase, 1440 RPM
- Straight and Angular Drop tests can be performed on a single Instrument
- Provision to lift up test platform by motorised guide mechanism.
- Over travel protection by safety limit switches.
- Drop Height : 380 mm (adjustable upto 1800 mm)



Model PDT - 135

## Digital Colour Matching - Colorimeter - TP 110

An excellent instrument to check color parameters digitally. Highly recommended as a handy QC tool to ensure color consistency.

Illuminating/Viewing Geometry	: 8/d
Measuring Aperture	: Ø 4mm
Detector	: Silicon photo electric diode
Locating	: Illuminating Locating / cross Locating
Measurement End Face	: Large stable end-face and small concave-convex end face
Colour Space	: CIEL *a*b*C*h* CIEL*a*b*
	: CIEXYZ
Colour Difference formula	: $\Delta E^*ab$ , $\Delta L^*a^*b^*$ , $\Delta E^*C^*h^*$
Light Source	: D 65
Light Source Device	: LED blue light excitation
Errors Between each equipment	: $\leq 0.80\Delta E^*ab$
Storage	: 100 nos. Standards 20000 nos. samples

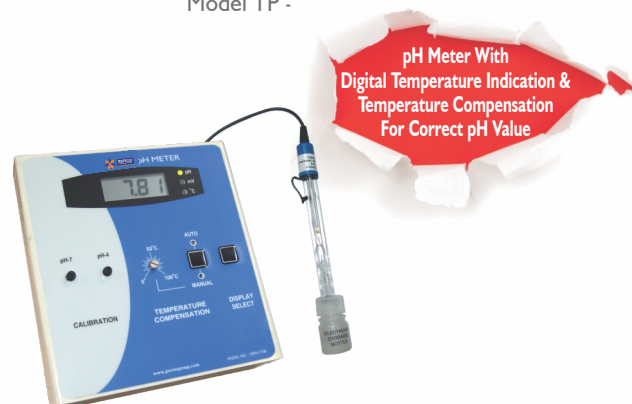


Model TP -

## PRESTO® pH Meter Table Top

An accurate and reliable Table Top Model, Digital pH Meter to check the pH of any kind of solution (Dyes, Chemicals etc.) With Digital Temperature Indication & Temperature Compensation for Correct pH Value. The equipment incorporates: ATC (Automatic Temperature Compensation) to give accurate pH in any Temperature and weather conditions. The unit has a Special Gel Filled PH Electrode.

Note: pH+Conductivity+TDS Meter also available.



## Portable Colorimeter - TP 310

Powders & Liquids also Measurable (optional)



Model TP - 310



TP310 is a high quality based very portable measuring device which is equipped with international color sensors with multiple channel that offer IC platform with more stability as well as accurate and efficient algorithms that provide users, fast and accurate management techniques and applications.

- Offers highly stable performance for measurement
- Flexible locating with high accuracy
- Light Sources : D65, D50A
- Computer software provides more functional expansion
- Viewing geometry 8°/d.
- The machine provides LED Blue light excitation sources.
- It is equipped with a silicon photo diode array type sensor.
- The measuring Aperture of the instrument is Ø 8mm/4mm.
- The machine provides a wide range of color space which includes CIEL\*a\*b\*C\*h\* CIEL\*a\*b, CIEXYZ
- The instrument works on following color difference formulas:  
 $\Delta E^*ab \Delta L^*a^*b \Delta E^*C^*h$



## Spectrophotometer - TP 800

Powders & Liquids also Measurable (option)



Model TP 800



TP800 colorimeter provides highly accurate results and is precised to any color. The device not only calculates the L\* ab value, but also helps to measure the Delta E value precisely. The device clearly displays the spectral reflectance curve with which one can realize the color matching functions easily and can calculate the factors of different color formulas.

- 45/0 geometric optical structure strictly adheres to DIN, CIE, ASTM and ISO standard.
- 3.5inch display screen with smooth touch operates the instrument easily.
- Two regular spectator standpoint, multiple light source modes, and a wide range of color systems.
- Recurring of the values of  $\Delta E^*ab$  is less than or equal to 0.04, and the errors are less than or equal to 0.2,  $\Delta E^*ab$
- Large storage capacity can save 10000 data in its memory.
- Inbuilt PC software offers controlling additional functions.
- Comes along with Universal test component which gives highly accurate results for test powders, liquids and pastes



\* Optional Universal Kit for checking liquid and powder



Model Spectrum Asia

\* EURO & USA models also available.

## PRESTO® Colour Matching Cabinet

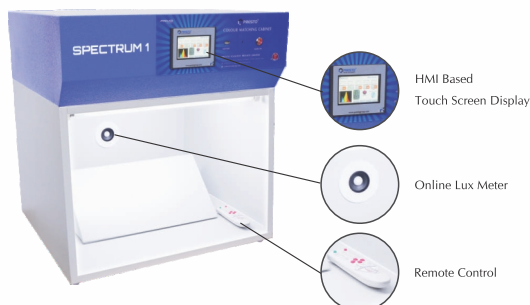
Color Matching Cabinet Spectrum Asia is a consistent tool useful for visual assessment and evaluation of colors. Used in various industries and laboratories to maintain quality and color consistency of a sample to detect the phenomenon of metamerism.

### Light sources :

Artificial daylight D-65, Fluorescent - TL-84, Filament, Ultra Violet, TFL Tungsten filament light & CWF Cool white light.

- Viewing Angle : 45°

\* EURO & USA models also available.



Model PMC 3.0 Prima Series

## PRESTO® Colour Matching Cabinet - Spectrum I

Presto color matching cabinet Spectrum - I is a simulaon tool, which is mainly used in quality control. The color matching cabinet accurately corrects light types and thus allows direct comparison of products that must have special color characteriscs.

### Specifications :

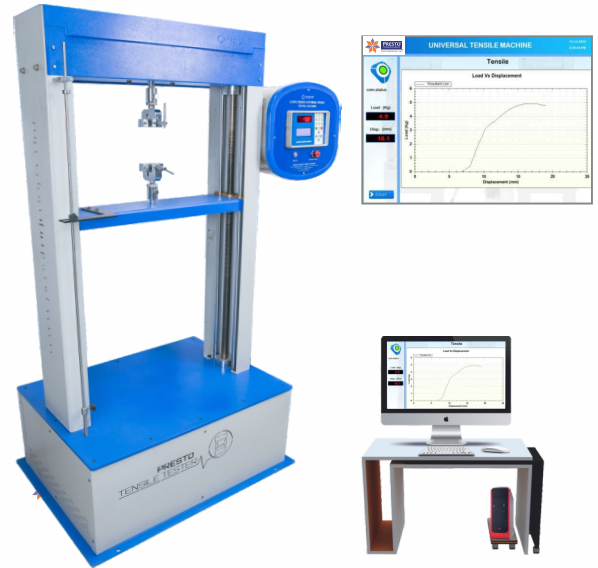
- Fastest Human Machine Interface (HMI) powered by Cortex-A8 high speed processor
- 45 deggre fixture for placement of sample
- USB option available (Pen drive is not a part of supply)
- Standard LUX criteria will be defined and alert message display when it decreases



## PRESTO® Computerised Tensile Testing Machine & UTM

Tensile Testing Machine Computerized is a consistent tool that helps the manufacturer in testing the breaking, tensile and compression strength of various materials, components and finished products. It is based on the principle of Constant rate of extension (CRE). PRESTO Tensile Testing Machine Computerized is manufactured under various test standards such as ASTM D412, ASTM D429-73, ASTM D624, ATM D638-01, ASTM D76, IS 13360-5-7, IS 3400(Part I - I 987).

- Advanced load sensor sensing through advanced electronics.
- Speed Control through Variable Frequency drive automation by Graphic user interface PC.
- Highly sensitive load sensor with linearity feature and repeatability
- Cross head travel length: 800 mm without grips
- Twin column rugged structure
- Safety limit switches for over travel safety
- Hardened lead screws/ball screws for frictionless movement
- Load cell calibrated by NABL approved proving ring/dynamometers
- Advanced Navigation System
- High accurate micro-controller based system controls with integrated software
- User Friendly software with intuitive icons and robust architecture
- Inbuilt hardware/software in pen drive / Online Link.
- Easy Data Management. User programmable product identification, lot no., shape of specimen, company name, operator details etc.
- USB compatible for high speed data transfer
- Export Test report in Excel & PDF format



Model Zues Ultimo 3.0

Other Capacities Available :

• Capacities (Kgf) :	10	20	50	100	250	500	1000	2500	5000	10000
• Least Count :	1gm	2gm	5gm	10gm	100gm	200gm	500gm	1Kg	2Kg	5Kg

Grips Optional :



Self Tighting grip



Wedge Type grip



Vice Type grip



Compression Plate



Flexural



Roller Type Grip



Wire/Rope Grip

## PRESTO® Ultra Low Deep Freezer

Ultra-Low Deep Freezer is a unique test cabinet designed to create low temperature inside the chamber to detect the change in the physical characteristics of material and to ascertain the actual working life of sample.

- Temperature control through PID with PT-100 sensor
- Twin compressor for fast cooling
- Capacity : 95 Liter
- Display : Digital LED 7 segment display
- Temperature Range : -10°C, -20°C, -40°C, -60°C (-80°C as per request)
- Least Count : 1°C
- Accuracy :  $\pm 2^\circ\text{C}$
- Material : Inside stainless steel & outer body mild steel
- Data logger option available on request.



Model ULT - 244

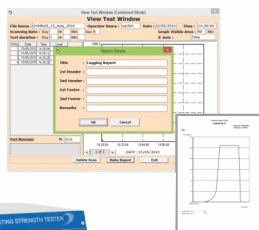


**BEST SELLER**



Model PBD - 400

\* Computer & Printer not part of the offer.



Test Report \*

## PRESTO® Bursting Strength Tester - Digital

It is measured by giving a hydraulic pressure through a rubber diaphragm on a circular area of the specimen of CFB under test conditions. Force required to burst or complete rupture of the board is measured through a Digital Indicator. The quality CFB is graded with the value of bursting strength.

Range : 40 Kg/cm<sup>2</sup> Least Count : 0.1 Kg/cm<sup>2</sup>

For determining the bursting strength of Woven; knitted Fabrics; non-wovens; paper; corrugated boxes & paper board etc. by application of a hydraulic Load under a rubber Diaphragm of a specific area.

### Features :

- It is completely micro controller based with original 'Intel' chip.
- Peak Hold & TARE facility for keeping the max. value in memory.
- Bright LED display.

### Optional :

- \* Model with printer also available.
- \* Computerised Model also available (PBD-400 C).

\* Presto Digital Bursting Strength tester are Excellent for testing paper and Corrugated Boxes with unique 2 point Calibration for low or high range. Change of Diaphragm / Dual Head not required. An economical accurate solution.



Model MFI-NEO 2.0

## PRESTO® Melt Flow Index - NEO 2.0

**Melt Flow Index Tester** – NEO 2.0 Model is a consistent tool useful for checking the flow properties of molten plastics/resins. PRESTO Melt Flow Index Tester is manufactured under various Test Standards ASTM D 1238-1992, IS 2267-1972, IS 2530-1963, IS 10810-1984.

\*Other model available are Melt Flow Index Tester – Deluxe Model with Digital PID Controller

- HMI based Touchscreen Model
- Result of MFI for individual test & average of all test.
- Microprocessor based inbuilt PID controller
- Automatic sample cutting
- Temperature setting and Preset Timer functions incorporated in HMI for accuracy and repeatability
- Die Steel barrel for uniform and consistent heating of barrel/test cylinder.
- Test report can be generated in PDF format.



Model PTM - 2020

## PRESTO® Moisture Meter

**Presto Moisture Meter PTM-2020** is the latest high sensitivity hand held moisture meter developed specially for the packaging industry. The portable moisture meter is used for measuring the moisture content of paper, corrugated sheets, cardboard stocks, kraft paper, paper tubes & paper bales, quickly and effectively.

Moisture plays an important role in the paper & packaging industry. Monitoring moisture is a unique challenge which supervisors, lab incharges & quality teams face. Product quality often gets severely affected due to unprecedented moisture especially in environments where unpredictable weather comes into play.

At times production & delivery points face rejections due to improper measurement & monitoring of Moisture.

### Key Features:

- Clear Digital LCD display with Battery Saving mode; Auto Power off
- Moisture Range for Paper: 1.7%- 18.2%
- Moisture range for baled scrap paper: 6% - 40%
- Selection of paper types : 3
- Setting of Tolerance limits
- Displays Pass Fail Report
- Average of upto 100 readings displayed
- Data storage: max 300 readings (100 per paper type)
- Inbuilt Calibration Facility
- Battery Type: Compact 9V Alkaline





## PRESTO® Izod / Charpy Impact Tester - Digital

IzOD/Charpy Impact Tester - Digital is a consistent tool to measure the impact resistance of materials under sudden falling force or impact. Izod / Charpy Impact Tester reveals the impact strength in terms of J/m. This tester is used to check the impact strength of plastics.

- Microprocessor based display for accurate test results
- Display for impact/absorbed energy and angle of test specimen
- Separate fixtures for Izod and Charpy test.
- Inbuilt calibration facility.
- Strong gripping fixtures for Izod / Charpy tests.
- Electromagnetic Pendulum release mechanism
- Capacity : Upto 25.02 Joules
- Range of Scales : 2.71 J, 5.42 J, 10.84 J, 21.68 J, 25.02 J
- Display : LED (Digital)
- Accuracy :  $\pm 2\%$  within entire range.
- Resolution : 0.02, 0.05, 0.1, 0.2 J respectively
- Pendulum Release Mechanism : Electromagnetic
- Release angle of pendulum :  $150^\circ$

Standards : ASTM D256 - 10, ASTM D618 - 13, ASTM D883 - 12, ASTM D1204 - 14, ASTM D1248 - 12, ASTM E691 - 14



Model IZC - 222

\*Optional Computerized Model Also Available

## PRESTO® Notch Cutter ( Motorised ) For Impact Tester

Notch Cutter (Motorised) for Impact Tester is used for making notch in the Izod / Charpy samples as per ASTM D 256. The instrument is used to make the notch of the plastic sheets up to 5 mm. The outer body is neatly powder coated with balanced base.

- Highly accurate motorised Cutting system
- Strong gripping fixtures for Izod V-Notch sample preparation
- V- Notch measurement thought precession micrometer
- Notch depth comparator
- Robust construction, corrosion resistance & high strength
- Depth micrometer : Mitutoyo make.
- Cutting Range : 2.5 mm with least count of 0.01 mm.
- Cutting angle :  $45^\circ$ .
- Power Requirement : 230 Volts; 50Hz; single phase.
- Depth of Notch : Upto 5 mm



Model NC - 22

## PRESTO® Box Compression Tester Digital

The PRESTO® Box Compression tester is used to check the compression resistance and long-term stacking strength of individual boxes, bulk containers and pallets. It stimulates the compressive load the package may experience in storage or during shipment due to stacking.

The equipment is very rugged with heavy cast iron base for stable performance at load. The highly sensitive load sensor is strategically placed to enable perfect corner to corner load results. The unit comes complete with over travel protection; 'TARE' and 'P/H' (Peak Hold) facility. A low cost & compact tester for the packaging industry.

\* Available in 2 Models of Platform Size :

• 600 x 600 mm	• 1000 x 1000 mm.
Model 600 x 600 mm	Capacity : 500 kgf L.C. 200 gm
Model 1000 x 1000 mm (1 x 1 Mtr.)	Capacity : 1000 Kgf L.C. 500 gm

Reference Standard : ASTM, IS, ISTA, ISO, JIS, TAPPI.

Optional :

\* Computerised model also available (PDBC-600 C).



Model PDBC - 600

Test Report \*

# Strong Business with Strong Association

Some of the Industry Giants Trust us with their Quality



\*All the above logos are the sole property of their respective owners and are used purely for depiction purposes only.

## Customer Speak Dil Se



“ We want to compliment you for the products and services you offer. Your responsiveness to the customer queries is commendable and the way you conduct business is an example of customer driven approach. Thank you for your excellent and continued support. We wish you all the best. We highly recommend your products and services to others in the industry. ”

~ **Rajesh Kumar Tanwar** - Deputy Manager Quality



“ We want you to know that we are very much pleased with the quality of your product and service your company provides. We sincerely appreciate your responsiveness and the way you conduct business. We look forward for doing business with you for year to come. Thank you for your excellent service. ”

~ **Nawabhanj** - Quality Assurance



“ Presto Salt Spray served us well for more than 7 years now ,it is an invaluable asset for our auto parts manufacturing firm. High quality product with advanced features. Glad to have Presto over other brands. ”

~ **Sant Pandey** from



“ Recently I bought a salt spray chamber at 30% less price as compared to Presto. But that testing instrument won't last for more than 4 months. Then I consulted Presto and had to buy new one from them. Now, I fully understood the true meaning of quality over price. Thanks, Presto for your commendable support. ”

~ **TDK India Pvt Ltd**



“ The purge feature of salt spray chamber is really awesome and the pneumatic opening system is a life saver. 5 stars from my side for their constant efforts of designing accurate testing instruments. ”

~ **Tarun Nehra**

Head Office :

**Presto Stantest Private Limited**

I-42, DLF Industrial Area Phase-1, Delhi Mathura Road, Faridabad 121003, Haryana, India

P : 9210 903 903, +91 129 4272727,  93111 24302 E : info@prestogroup.com

2023-2024



• Faridabad • Sonipat • Kolkata • Mumbai • Pune • Ahmedabad • Chennai • Bangalore • Hyderabad

[www.prestogroup.com](http://www.prestogroup.com)